

## **PURPOSE**

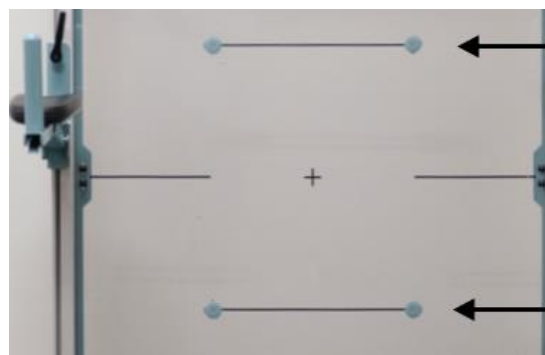
This document is a review of the basic workflow concepts to use the stitching board. This procedure will combine up to 3 individual images into 1 combined image. To review additional FDX console operations review the Quick Guide on FDX Console Stitching, DOC-0038775.

### **1.0 Stitching Stand Setup**

- 1.1 Roll the stitching stand in front of the upright wall bucky and center to the wall bucky.
- 1.2 Verify that the stitching board caster wheels are locked. The paddle will be down when locked.
- 1.3 Verify that the arm rests are adjusted to the correct height.



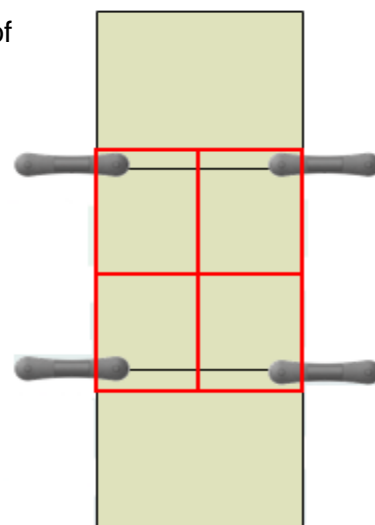
- 1.3.1 Four stitching markers are required. They should be placed at the upper and lower borders of the middle section at the time of installation. There are two types of stitching markers. Stitching marker tabs or the full size stitching markers.



**Upper Stitching Markers**

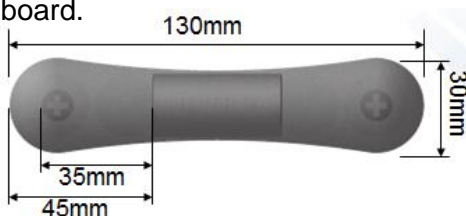
Middle section of the Stitching Board

**Lower Stitching Markers**

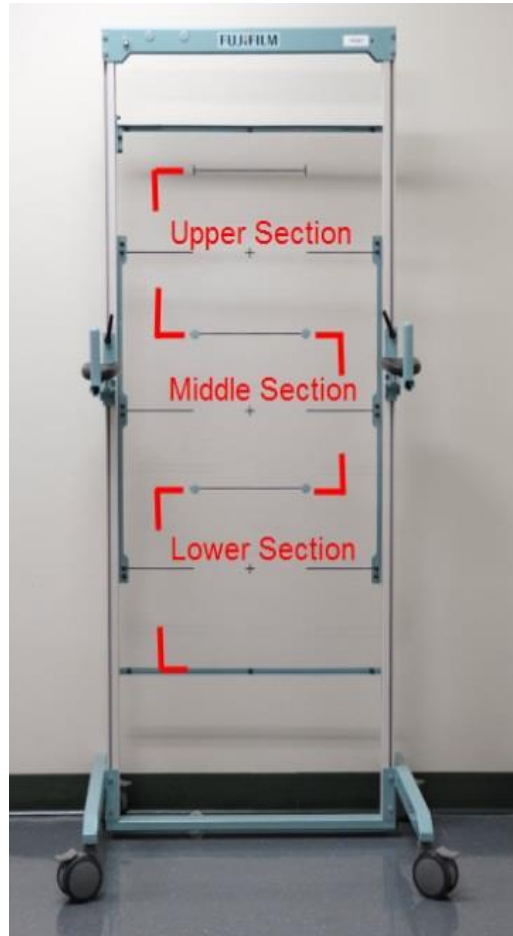


### **1.3.2 Stitching Marker**

The stitching marker should be placed so that 35mm is inside edge of the exposure field. A guide line is marked at 35mm from the joint marker on the marker device and on the stitching board.



- 1.3.3 The technologist must determine whether to center to the upper two sections, the lower 2 sections or all three sections.



- There are two types of rolling stands; one has a holder for the D-EVO flat panel detector attached to the rolling cart. The other stand is designed to be used with an existent wall bucky.
- The technologist should understand the locations of each section and be able to identify the locations of the stitching markers relative to each section of the stitching board.

## **2.0 Stitching stand vertical centering**

### **2.1 Upper two section stitching:**

- Adjust the height of the stitching board so that the top line of the upper section includes the superior aspect of the required anatomy.
- The upper line of the middle section which has the stitching tabs attached will be the vertical centering point for the x-ray tube height. Adjust the x-ray tube height to this point.



**Lower or Raise the  
Stitching Board for use  
of the upper 2 sections**

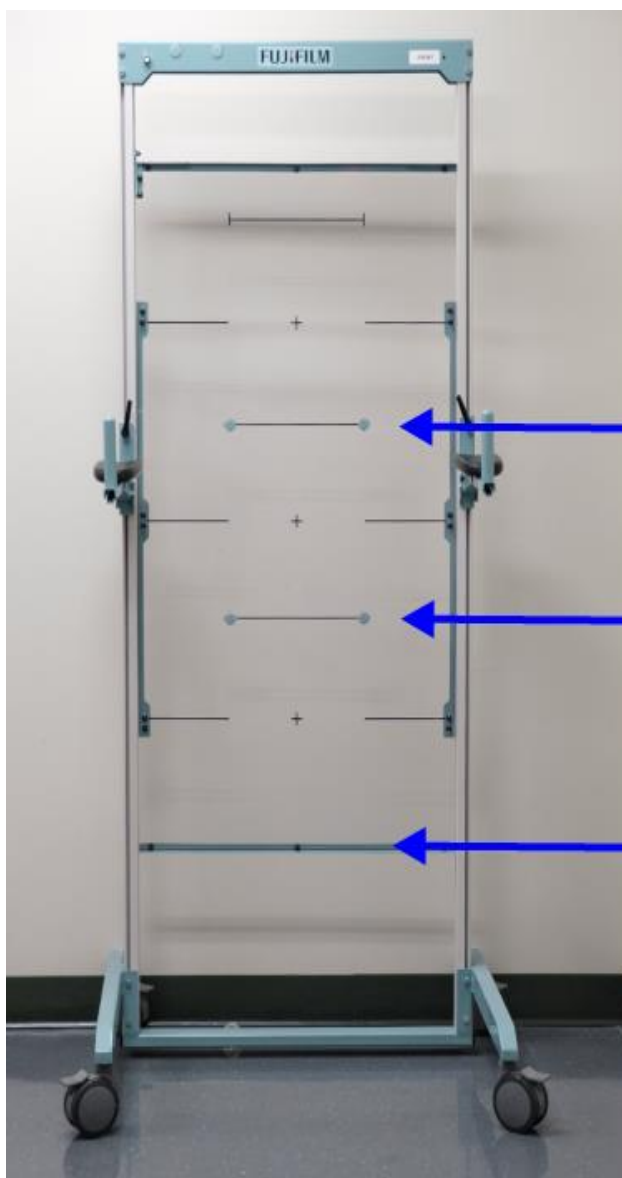
Adjust this level to be  
above the upper anatomy

Adjust the height of the X-  
ray Tube to this level once  
the height of the Stitching

Lower Anatomy border to  
be included

## 2.2 Lower two section stitching:

- Adjust the top line of the middle section to the superior aspect of the anatomy to be included.
- The lower line of the middle section which has the stitching tabs attached will be the vertical centering point for the x-ray tube height. Adjust the x-ray tube height to this point.



**Lower or Raise the  
Stitching Board for use  
of the lower 2 sections**

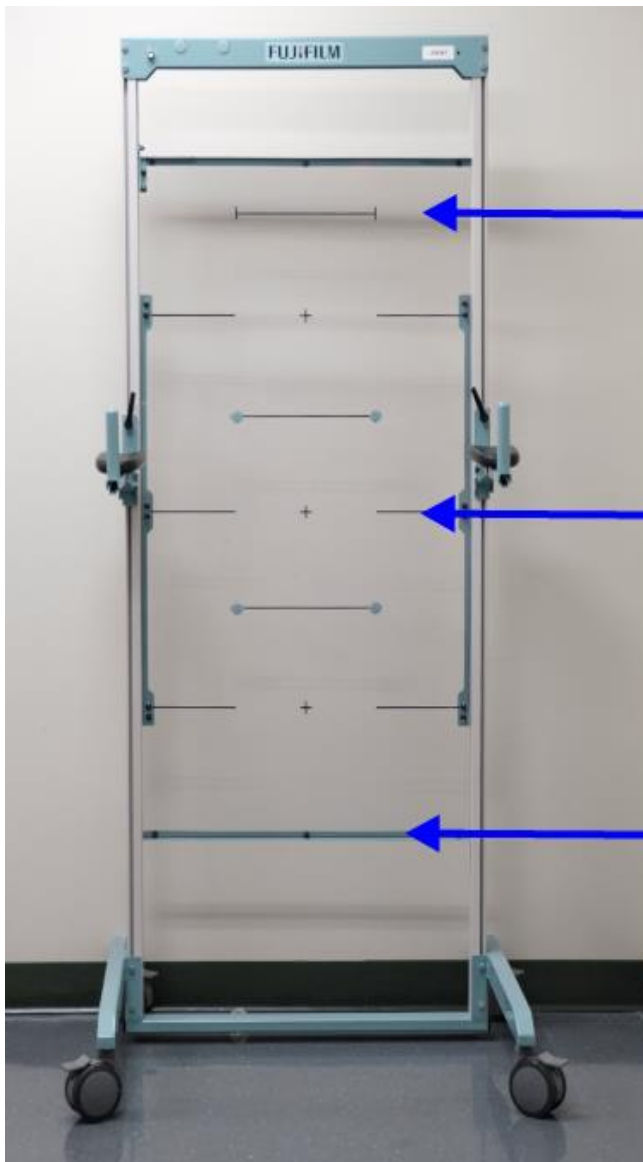
Adjust this level to be  
above the upper anatomy

Adjust the height of the X-  
ray Tube to this level once  
the height of the Stitching

Lower Anatomy border to  
be included

**2.3 Three section stitching:**

- Adjust the top line of the upper section to the superior aspect of the anatomy to be included.
- The cross and corresponding line seen on the middle section will be the vertical centering point of the x-ray tube. Adjust the x-ray tube height to this location.



**Lower or Raise the  
Stitching Board for use  
of all 3 sections**

Adjust this level to be  
above the upper anatomy

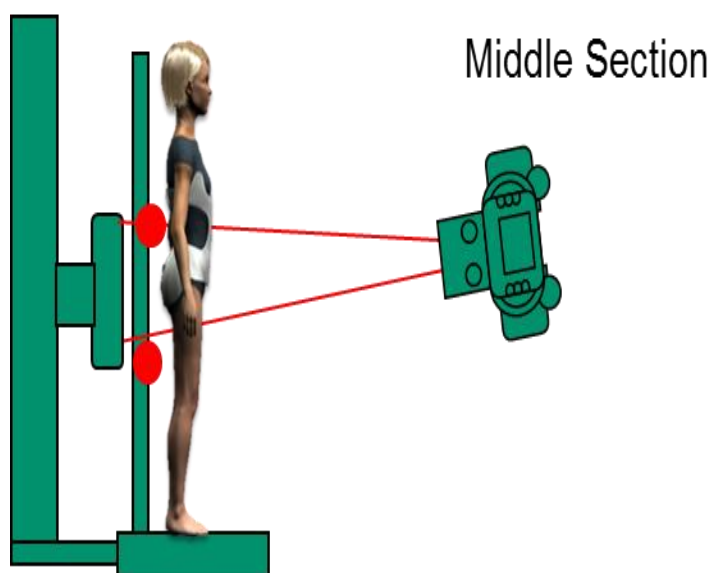
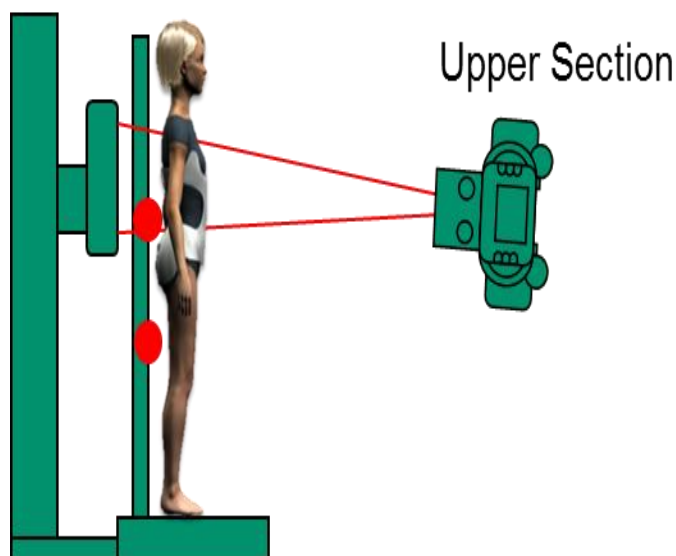
Adjust the height of the X-  
ray Tube to this level once  
the height of the Stitching

Lower Anatomy border to  
be included

### 3.0 Imaging workflow for two or three section stitching

#### 3.1 Tube angles and Centering Workflow for upper 2 section stitching

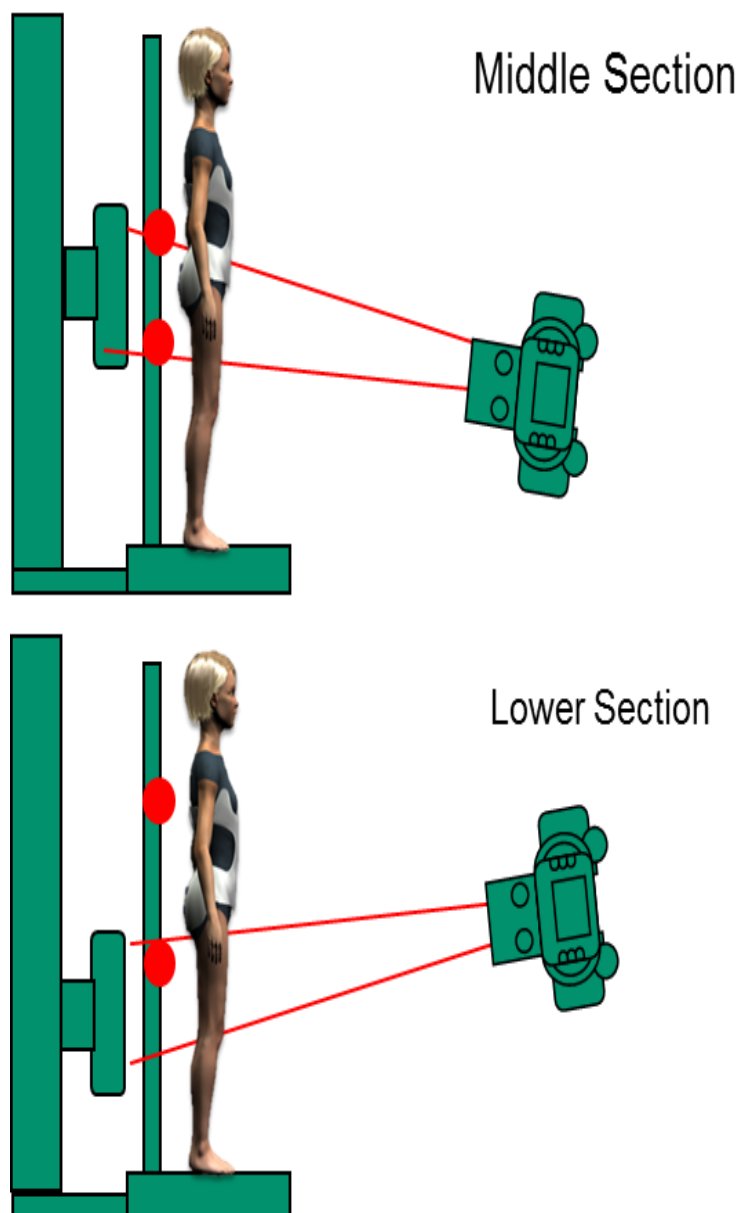
- Center the stitching board to the appropriate height as described in section 2.1.
- Center the X-ray tube to the location as described in section 2.1.
- Do not change the height of the X-ray tube from this location.
- Raise the detector holder or wall bucky to the center of the upper section of the stitching board.
- The overlapped portion of the two images is preferably 30 mm.
- Angle the central ray cephalically to the center of the detector. Make the exposure.
- Lower the detector holder to the center of the lower section of the stitching board that is being used.
- Angle the central ray caudally to the center of the lower section of the stitching board. Make the exposure.
- Automatic stitching will occur when the stitching icon is selected or follow the manual FDX stitching workflow. For additional information review; The Quick Guide on FDX Console Stitching, DOC-0038775.





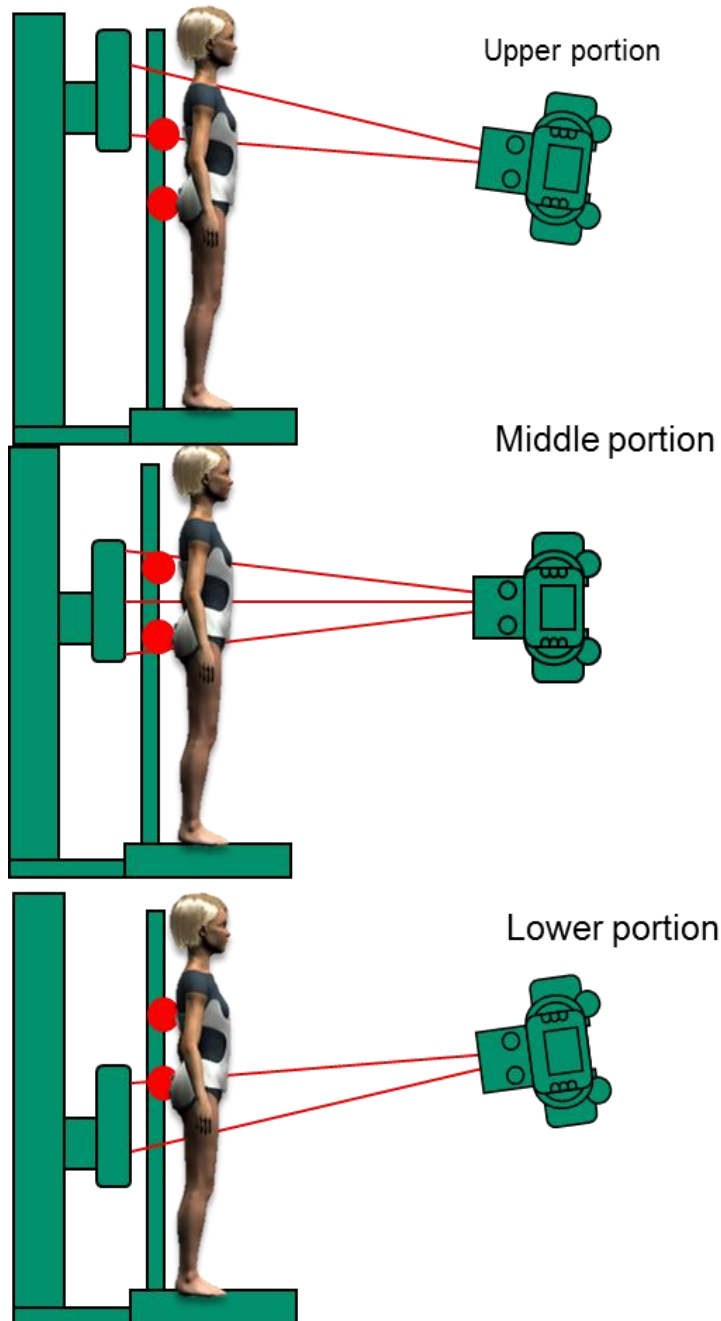
### 3.2 Tube angles and vertical centering workflow for lower 2 section stitching

- Center the stitching board to the appropriate height as described in section 2.2.
- Center the X-ray tube to the location as described in section 2.2.
- Do not change the height of the X-ray tube from this location.
- Raise the detector holder or wall bucky to the center of the middle section of the stitching board.
- The overlapped portion of the two images is preferably 30 mm.
- Angle the central ray cephalically to the center of the detector. Make the exposure.
- Lower the detector holder to the center of the lower section of the stitching board that is being used.
- Angle the central ray caudally to the center of the lower section of the stitching board. Make the exposure.
- Automatic stitching will occur when the stitching icon is selected or follow the manual FDX stitching workflow. For additional information review; The Quick Guide on FDX Console Stitching, DOC-0038775.



### 3.3 Tube angles and vertical centering workflow for three section stitching

- Center the stitching board to the appropriate height as described in section 2.3.
- Center the X-ray tube to the location as described in section 2.3.
- Do not change the height of the X-ray tube from this location.
- Raise the detector holder or wall bucky to the center of the upper section of the stitching board.
- The overlapped portion of the three images is preferably 30 mm.
- Angle the central ray cephalically to the center of the detector. Make the exposure.
- Lower the detector holder to the center of the middle section of the stitching board.
- Direct the central ray horizontally to the center of the middle section of the stitching board. Make the exposure.
- Lower the detector holder to the center of the lower section of the stitching board.
- Angle the central ray caudally to the center of the detector. Make the exposure.
- Automatic stitching will occur when the stitching icon is selected or follow the manual FDX stitching workflow. For additional information review; The Quick Guide on FDX Console Stitching, DOC-0038775.





 <b>FUJIFILM</b> Value from Innovation	<b>Quick Guide for FDR D-EVO Stitching Board</b>	<b>DOC-0040168-A</b>
		Effective Date: 12/12/2018
		Page 9 of 9

#### 4.0 For additional information:

See the appropriate section of the reference manuals for FCR, FDR D-EVO image combining sections for further detail. Additional information on the FDX console stitching function can be reviewed in the Quick Guide on FDX Console Stitching DOC-0038775.