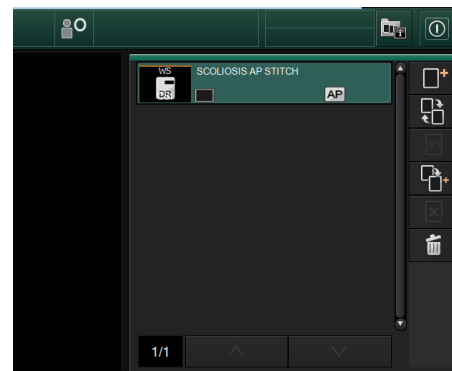
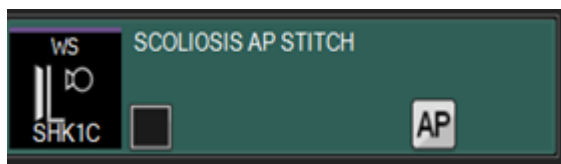


FDX Console Image Stitching Workflow

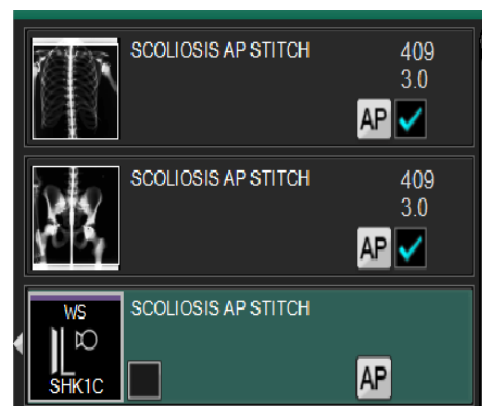
☐ **Registration of patient**

- Select the correct patient from the RIS tab or manually register the patient.
- Select or verify that the correct stitching exposure menu from the menu display tabs.
- Image combining or stitching exposure menus will have a WS designation.



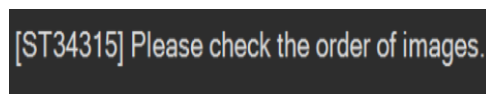
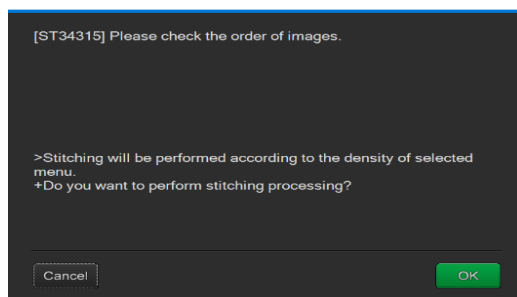
☐ **Acquire the first image**

- After the first image is acquired two additional exposure menus will populate.
- Expose the next one or two exposure menus as required to include the required anatomy. A maximum of 3 exposures can be stitched.
- If only two exposures are required, do not delete the third empty exposure menu. Leave it in place and continue to the console stitching process/Image combining icon.



☐ **Console stitching process**

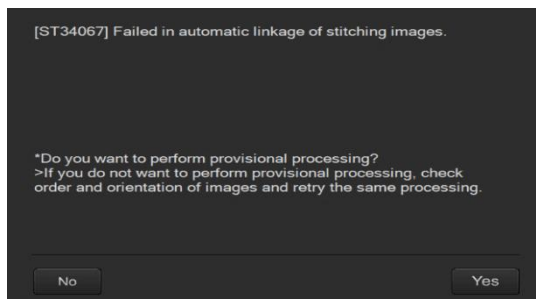
- Once all of the required exposures are performed.
- Select the image combining icon.
- A warning message will populate prior to the system attempting automatic stitching. If the order is not correct select cancel and click and hold the menu and move it to the correct position.



← Press "OK"

- The system will automatically link the images or require manual stitching to be performed. If the images are automatically linked evaluate the stitched image for image quality and perform the standard QA functions as required and complete the study.

- The system will determine if automatic linking is possible. If automatic linking fails a warning message will populate.



- If manual stitching is required, select the QA home icon.
- Then activate the manual stitching icon.



☐ Manual Stitching workflow

- After selecting the manual stitching icon. The technologist will have a choice to select either S value adjustment or 2 choices image movement management.

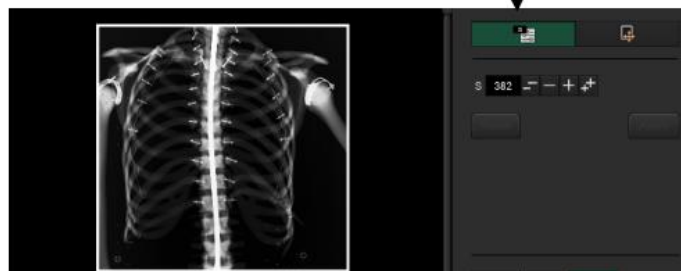
The methods of image movement are:

1. Fine adjustment
2. 2 point adjustment

- The S value adjustment icon will allow the technologist to adjust the brightness of each image individually. Click on each image area and adjust the S value individually. Click on the + and - radial buttons to adjust the S value or hover the mouse into the image area and press and hold the left mouse button and move the mouse to adjust the S value.

Click any of the image sections

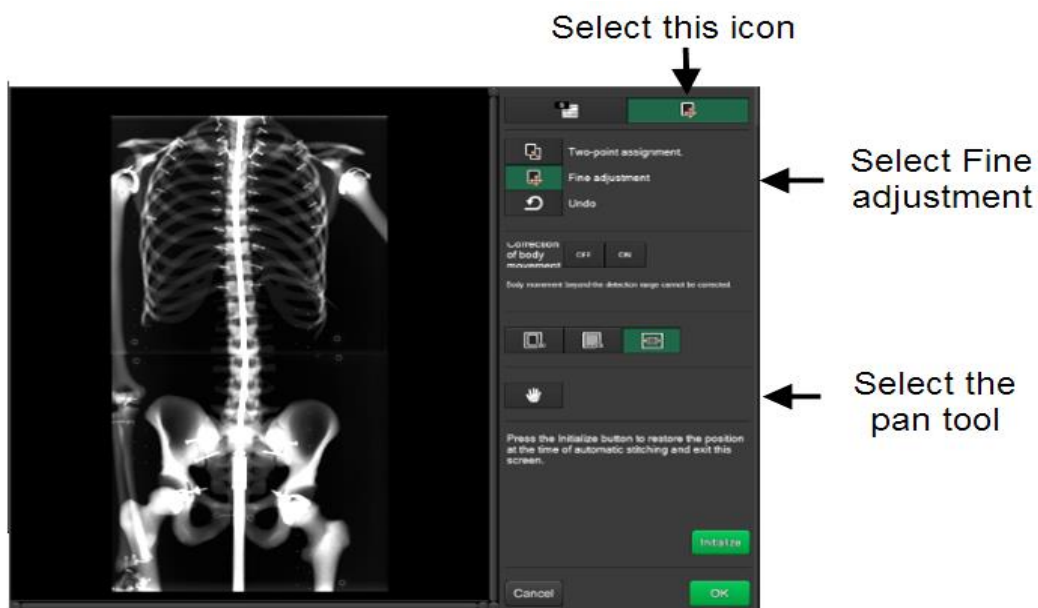
Select the S adjustment icon



S# adjustment icon



- Fine adjustment selection will allow you to move each image independently to achieve proper alignment of the stitching markers or the overlapped anatomy.

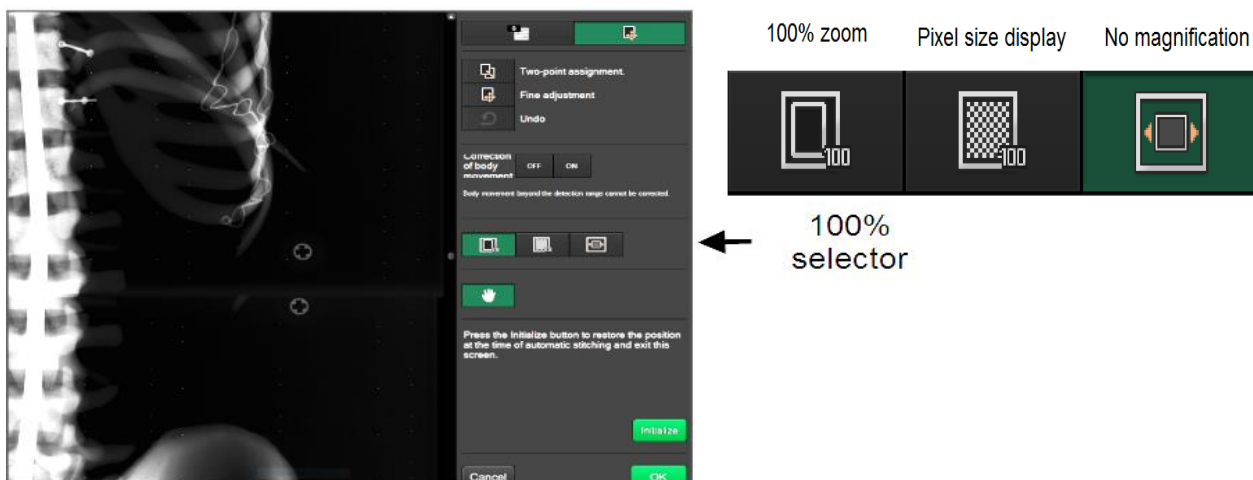


- The technologist can select the 100% zoom or Pixel size display to zoom in to the images. Adjust the alignment markers or anatomy to correct position.

Improperly aligned stitching markers



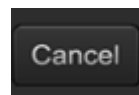
Properly aligned stitching markers



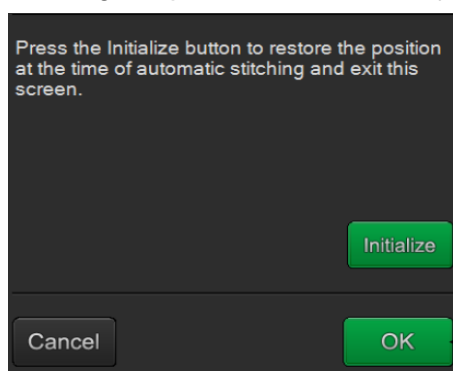
- An alternative method to fine adjustment is to select the two point adjustment.

Select the point on one image and then select the point on the second image, the Images will be moved to those two points.

- The cancel button, will undo either the fine adjustment or the two point adjustment action or S# adjustment. You will exit the manual stitching function and have to reselect QA and the manual stitching icon.



- If manual stitching has been performed and satisfactory alignment has been achieved select the "OK" button. If you choose the initialize button, the stitched images will returned to their misaligned positions and fine adjustment will have to be performed again.



Select "OK" to keep realigned images

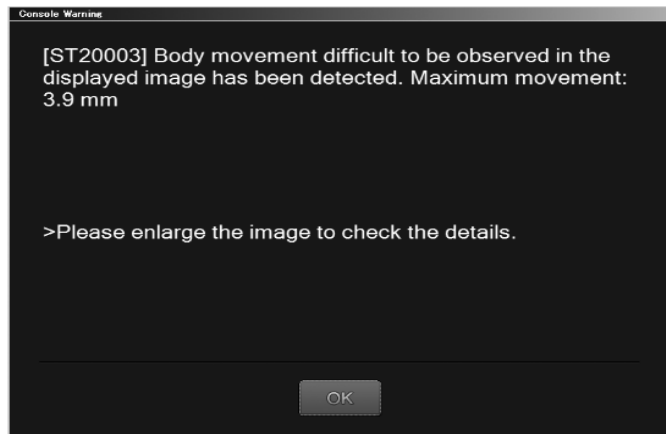
- The stitched image will be presented for QA. Shadow masking and other QA functions can be applied as needed. Then press the study completion icon to send the images to the desired output location.
- If the images have been stitched incorrectly or fine adjustment must be repeated. Select the unstitch icon on the display to repeat the process.



☐ Additional information

- Process to follow if a third image has been acquired accidentally and is blank or unnecessarily exposed.
 1. If a third image or blank image needs to be removed prior to stitching. The technologist must add any regular (RT) exposure menu to the exposure list.
 2. The technologist should then press and hold the image thumbnail until an aqua blue box is seen around the thumbnail. Let go of the mouse button, and move the mouse cursor to the newly added (RT) exposure menu's blank thumbnail and press the left mouse button to move the image to this new menu.
 3. Then use the standard rejection workflow to reject that image.
 4. Select the image combining icon and follow the instructions above for image combining.

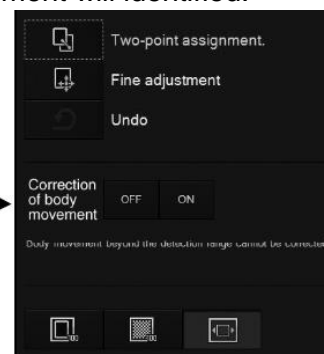
- The system is designed to adjust automatic brightness for the stitched images. If individual image S value adjustment is desired, this function must be setup during installation. The S/L adjustments can also be made to the entire stitched image in the QA function.
- The motion detection warning can be turned on at the time of installation and setup. The motion detection software can identify up to 10 mm of vertical movement and 40 mm of horizontal movement can be identified. If the movement is greater than these measurements, the warning message will not populate. Automatic adjustment for motion can only occur if the movement is less than 10 mm in size.



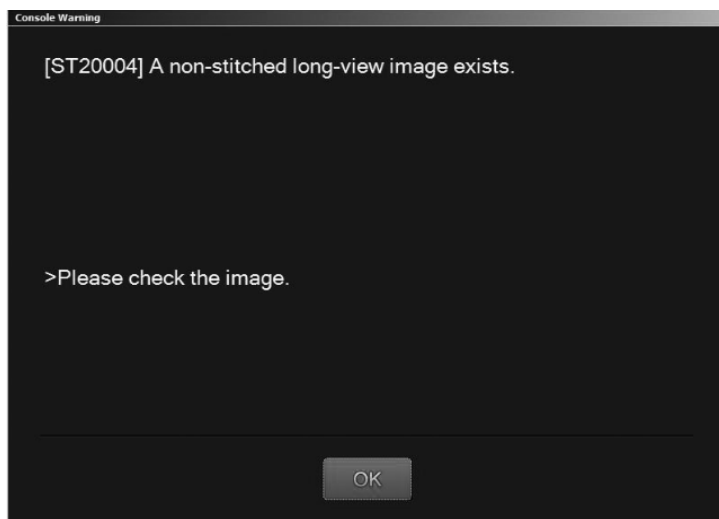
[ST20003] Body movement difficult to be observed in the displayed image has been detected. Maximum movement: 3.9 mm

The maximum movement will identified.

Correction of
body movement
can be turned
off or on



- If an attempt is made to close the study prior to stitching the image, a warning message will appear. The images must be stitched prior to closing the study. Click "OK" and stitch the images then suspend the study or close the study.



[ST20004] A non-stitched long-view image exists.

- For more information, refer to FDX Console Options Reference Guide and locate the appropriate section for FCR, FDR D-EVO image combining section for further detail.