

SONIMAGE MX1 PLATINUM

POINT-OF-CARE ULTRASOUND SYSTEM



Our next-generation compact, point-of-care ultrasound system, the **SONIMAGE® MX1 Platinum**, allows you to make quick and confident decisions. This powerhouse system transforms patient care through innovative tools and technologies that empower you to streamline workflow and provide the highest quality of care...leading to better decisions, sooner.

A Full Suite of Compatible Transducers

The **SONIMAGE MX1 Platinum L18-4** is a broad frequency linear probe that offers both near-field resolution and deep penetration for scanning of both superficial and deep joints and structures for more precise diagnosis.

The **HL18-4 hockey stick linear transducer** is especially suited for MSK and pain management applications, with the ability to reach difficult to access areas with a small footprint and maneuverability.

Deliver exceptional patient care in preoperative environments throughout the care path with the **SONIMAGE MX1 Platinum S4-2** phased array transducer.

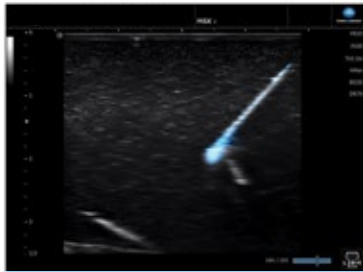


The **Camera Function** on the MX1 Platinum System delivers picture-in-picture on the ultrasound image for improved documentation and review. Through a USB external camera, both the clinical and camera images are stored simultaneously, while the built-in microphone enables voice messaging and note dictation.

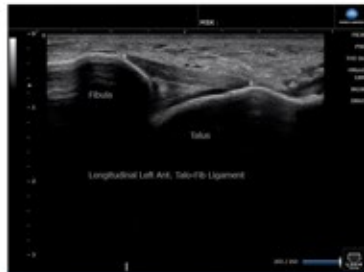


SONIMAGE MX1 PLATINUM

POINT-OF-CARE ULTRASOUND SYSTEM



SNV® - Simple Needle Visualization



Anterior Talo-Fibula Ligament



Achilles tendon Left Longitudinal



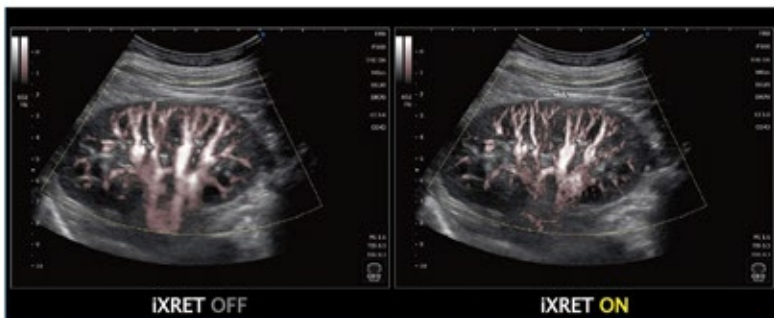
Tarsal Tunnel Trans (Top)
PT Artery Longitudinal (Bottom)



Biceps Tendon Trans.



Patella Tendon Longitudinal



IXRET: "eXtended Resolution Enhancement Technology"



Optional
3-Probe Connector Shown

2020IMAGING.NET/MX1P

SONIMAGE is a registered trademark of Konica Minolta Inc. © 2023 Konica Minolta Inc. All Rights Reserved.
Please visit 2020imaging.net or contact 866-734-6234 for more information. 829 Virginia Rd. Ste A - Crystal Lake, IL 60014

M2135 0423 RevA